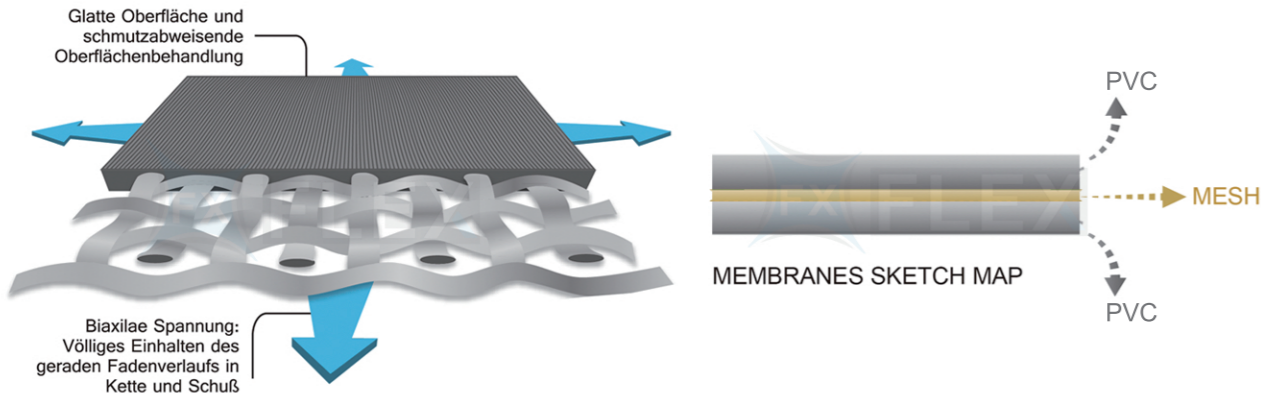


PVC Inflatable Fabric (SGS)

Are you still worried about not being able to find high-quality inflatable material?

We can change the specifications and weaving form of polyester base fabric yarn. This can change the tear strength, peel strength, etc. of PVC inflatable boat fabric. In the process of producing inflatable boat material, the thickness of the PVC tarpaulin fabric can be adjusted to control the weight of the inflatable material. And add flame retardant, anti-UV, anti-static, chemical resistance, etc. to the raw material PVC resin to achieve the desired effect.

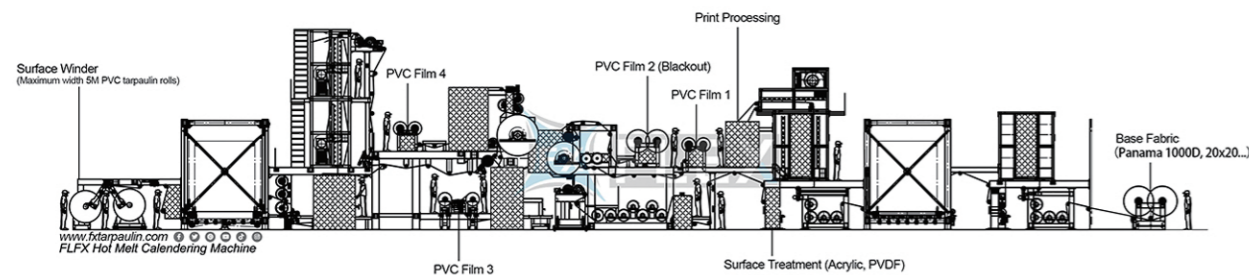


FLX's PVC inflatable fabric production machine

In order to meet the global market demand for PVC inflatable boat fabric, FLX manufacturer can provide multiple types of high-quality tent materials. Using technology imported from Germany, the maximum width is 5 meters, which can reduce the number of welding times for large tents. And the color, pattern and performance of the tent can be customized according to the user's needs.

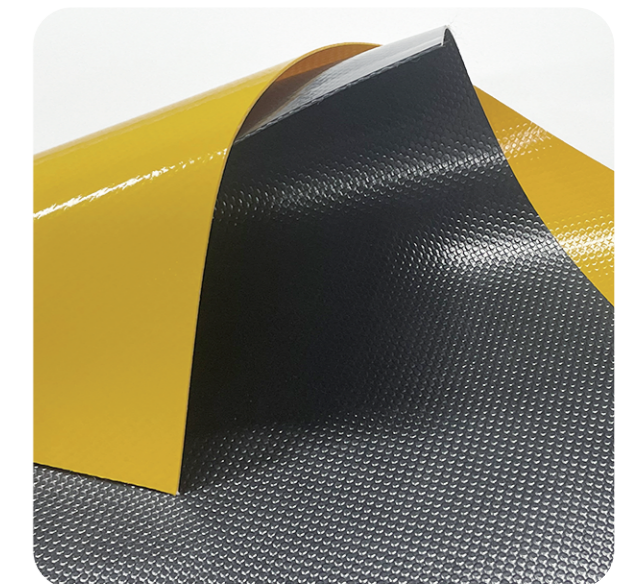
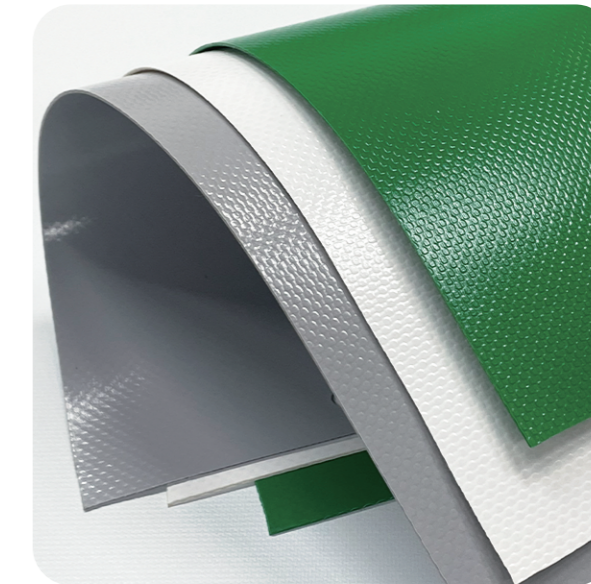
This inflatable material has high strength, wear resistance and air tightness, while meeting environmental standards such as lead-free, 6P, RoHS, and Reach. Products are used in entertainment and first aid fields, such as inflatable jump beds, inflatable castles, emergency slides and inflatable boats.

FLX Hot Melt Calendering Machine



PVC Inflatable Boat Fabric

	FLFX9001	FLFX9002	FLFX9003	FLFX9004	Testing Method
Technical properties					
Total Weight	630 g/m ² 18.5 OZ/YD ²	700 g/m ² 20.6 OZ/YD ²	610 g/m ² 18 OZ/YD ²	595 g/m ² 17.5 OZ/YD ²	DIN EN ISO 2286-2 BS 3424 Method 5A
Base Fabric	100%PES 1430Dtex 20×20/inch	100%PES 1100Dtex 18×17/inch	100%PES 1100Dtex 20×20/inch	100%PES 1100Dtex 18×21/inch	DIN EN ISO 2060
Tensile Strength (warp/weft)	2600/2400 N/5cm 585/540 LBS/2inch	2800/2600 N/5cm 630/585 LBS/2inch	2400/2200 N/5cm 540/495 LBS/2inch	2600/2400 N/5cm 585/540 LBS/2inch	DIN 53 354 BS 3424 Method FS 5100
Tear Strength (warp/weft)	400/400 N 90/90 LBS	500/500 N 112/112 LBS	250/250 N 56/56 LBS	500/450 N 110/100 LBS	DIN 53 363 BS 3424 Method FS 5134
Adhesion	150 N/5cm 33 LBS/2inch	150 N/5cm 33 LBS/2inch	150 N/5cm 33 LBS/2inch	150 N/5cm 33 LBS/2inch	DIN 53 357 FS 5970 BS 3424 Method 9B
Width(Optional)	1.6/ 2.5/ 2.8/ 3/ 3.2 /5.1m	1.6/ 2.5/ 2.8/ 3/ 3.2 /5.1m	1.6/ 2.5/ 2.8/ 3/ 3.2 /5.1m	1.6/ 2.5/ 2.8/ 3/ 3.2 /5.1m	-
Temperature Resistance	-30°C / +70°C	-30°C / +70°C	-30°C / +70°C	-30°C / +70°C	DIN EN 1876-2 BS 3424 Method 10 FS 5874
Flame Retardancy (Optional)	B1, M2	B1, M2	B1, M2	B1, M2	EN 13501 NFPA-701 ASTM E84
Lacquering (Optional)	Gloss	Gloss	Olympic	Gloss	
Application	Inflatable Boat	Inflatable Boat	Inflatable Toy	Inflatable Toy	



Email: hainingfx@gmail.com
WhatsApp: +86 13484130360 China